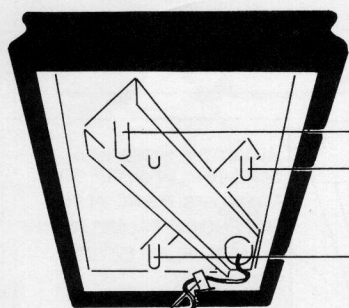


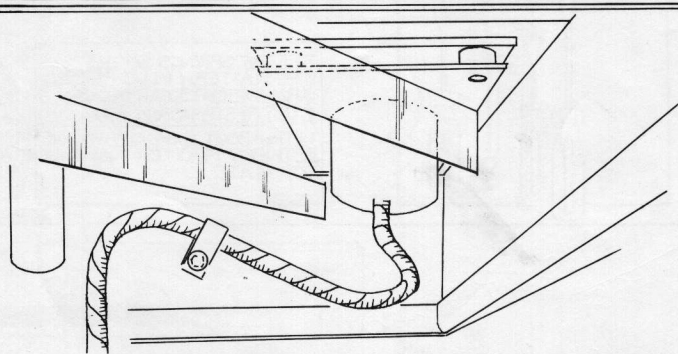
SETTING THE SUSPENSION ON THE VOYD AND VALDI TURNTABLES.



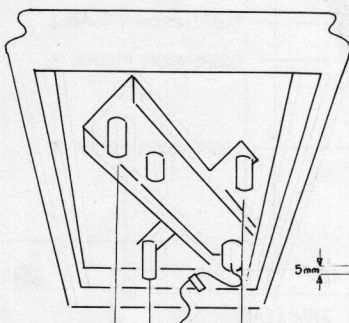
SUSPENSION PILLAR 1.
SUSPENSION PILLAR 2.
SUSPENSION PILLAR 3.

P-CLIP.

ARM LEAD.

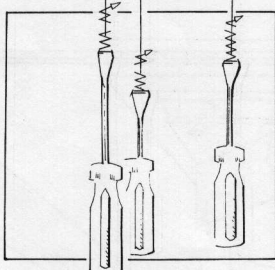
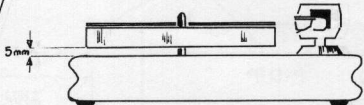


AFTER HAVING FITTED ARM AND ARM BOARD ASSEMBLY TO SUBCHASSIS ROUTE ARM CABLE THROUGH P-CLIP WITH ENOUGH SLACK SO AS NOT TO FORM ANY SHARP BENDS OR RESTRICT SUBCHASSIS MOVEMENT. ~BE PREPARED TO ADJUST THIS AGAIN AFTER HAVING SET UP THE SUSPENSION.



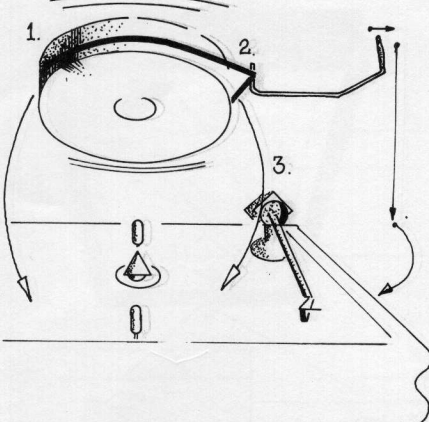
ADJUST THE SUSPENSION BY SCREWING IN OR OUT THE ADJUSTERS FOUND IN THE SUSPENSION PILLARS USING A LARGE FLAT BLADE SCREWDRIVER.

5mm

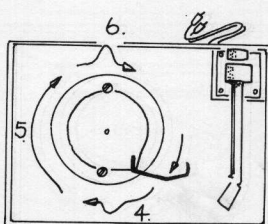


SET THE SPRINGS SO THAT THE PLATTER (PLUS RECORD, ARM, WEIGHTS, CARTRIDGE ETC.) RESTS HORIZONTAL WITH ABOUT 5mm. CLEARANCE BETWEEN PLATTER RIM AND TOP PLATE.

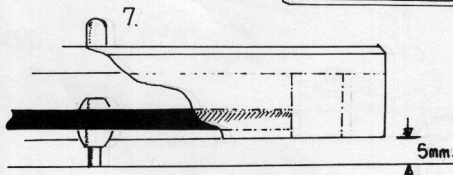
FITTING DRIVE BELT TO VALDI.



1. FIT DRIVE BELT TO HUB.
2. FIT HOOK UNDER BELT.
3. LOWER PLATTER ONTO BEARING.
4. LIFT BELT OVER FRONT PULLEY USING HOOK
5. SLIDE HOOK AROUND TO BACK PULLEY.
6. LIFT BELT OVER BACK PULLEY USING HOOK.
7. VISUALLY CHECK THAT THE BELT IS OVER BOTH PULLEY CROWNS.



7.



5mm